

SCAFFOLD TOWER

Height 1.2 - 4.9 metres



1 ALWAYS USE COMMON SENSE

This Equipment Safety Data Sheet is intended as a guide only for the safe operation of this scaffold tower. It does not override the manufacturers instructions or Worksafe NZ recommendations or any other industry requirements. By law you **MUST** be a competent qualified person with sufficient knowledge and skills to erect, use and dismantle this scaffold tower. If you are unsure about any aspect of this scaffold or its capabilities or its suitability, or if you are in doubt as to its proper usage you must contact one of the Hire Company Employees or an industry expert before continuing.

2 PLANNING FOR SAFETY

A risk assessment **MUST** be carried out before erecting this scaffold tower. You must:

- **Specify the task.**
- **List the range of methods by which the task can be carried out.**
- **Ensure that this scaffold tower is the best equipment for the intended job.**
- **List the hazards involved and the associated risks.**
- **The intended method of work and any other requisite plant and material.**
- **Emergency and rescue procedures.**

Once the pre-start risk assessment has been completed you must specify the safe work procedure and communicate this to everyone.

3 PERSONAL PROTECTIVE EQUIPMENT



HEARING PROTECTION



PROTECTIVE FOOTWEAR

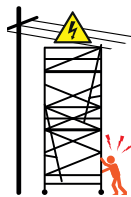


HIGH VISIBILITY CLOTHING

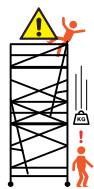


FALL ARREST HARNESS may be required

4 IMPORTANT HAZARDS



- Risk of electrocution! Identify all electrical or overhead services before starting. Minimum 4 metres between scaffold and any electrical services.



- Risk of equipment failure! Scaffold must be assembled in strict accordance with manufacturers instructions. Fit all components and braces.
- Risk of injury from falling objects! Identify and secure any objects which may fall on the operators or people below the work platform.



- Risk of toppling! When erecting scaffold or moving always ensure terrain is stable, flat and clear of any obstructions. Never work outside the safety barriers of the scaffold.

! DANGER!

- Scaffold must be inspected and deemed to be safe by a competent person before use.
- Take care when entering or exiting the scaffold. Only Internal access ladders to be used, with self-closing hatches. Always use three points of contact when climbing up or down.
- This scaffold must not be altered or changed in any way that may affect its height, strength or integrity.
- Never use in high winds or heavy rain.
- Never use the scaffolding if you are tired or under the influence of alcohol, drugs, medication or any substance capable of impairing your abilities. Minimum age 18 years.

5 WORK SITE PRECAUTIONS

Before commencing work you must ensure that you have completed a Job Safety Analysis, that scaffold tower is erected by a competent person to the manufacturers specifications, that the work site is clearly defined (and isolated if necessary) and that emergency precautions are in place.

Before commencing work ensure you have a First Aid Kit and Fire Extinguisher readily available, and that you can call 111 in an emergency.



FIRST AID KIT

IN EMERGENCY DIAL 111

SCAFFOLD TOWERS MUST BE STABLE. POSITION AS CLOSE AS POSSIBLE TO WORK AREA

ELECTRICAL SERVICES MUST BE IDENTIFIED. DISCONNECT OR INSULATE

4 METRES

